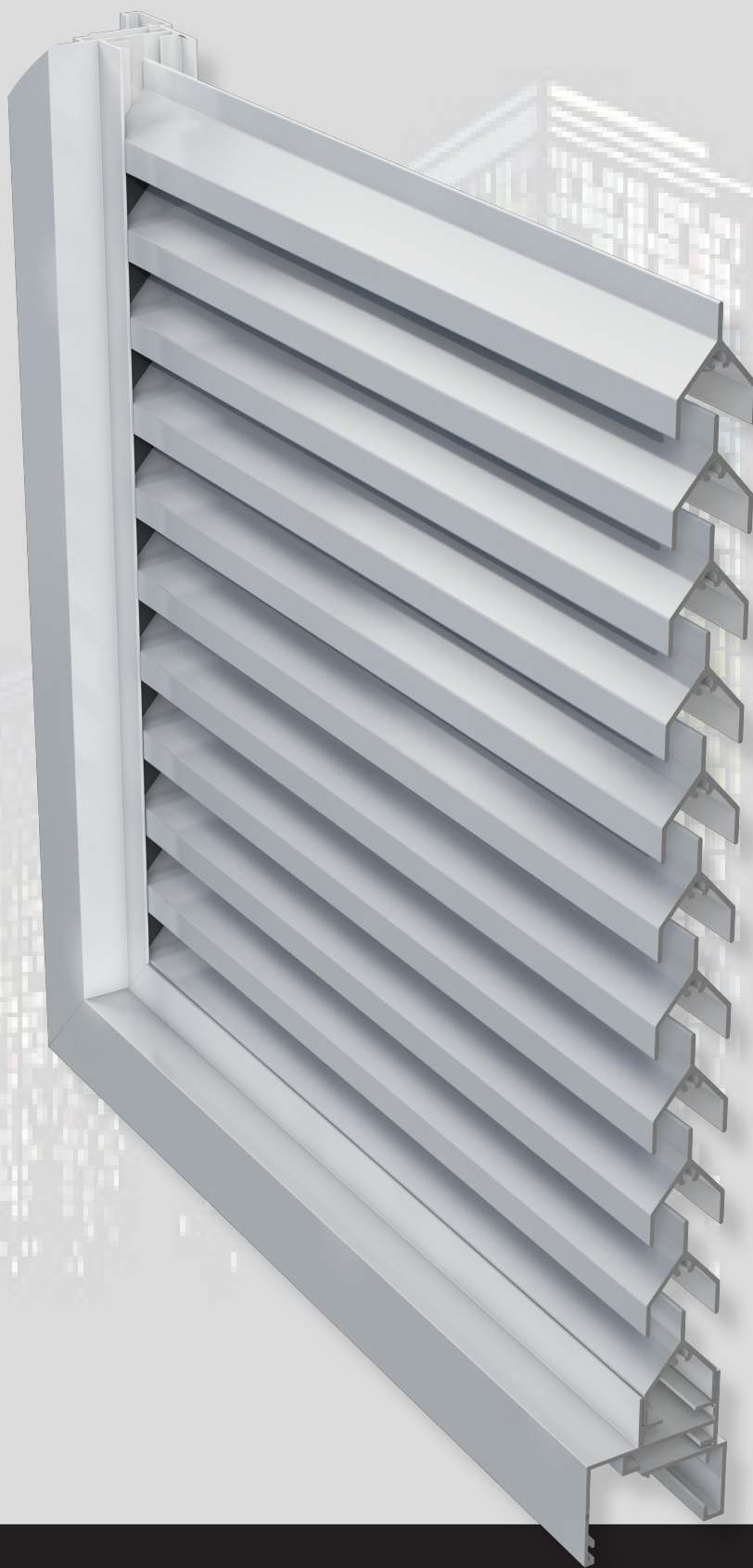




crealco

Fixed Louvres



Fixed Louvres

A product of

WISPECO
Aluminium



The Crealco Fixed Louvre range of profiles is ideal for all residential solutions to assist in improving the thermal efficiency of a building thus reducing energy costs, but still allowing light and the flow of air into the building.

FEATURES

- Variety of profiles to choose from.
- Ideal for door louvre grills.
- Designed for window shutters .
- Easy to clean and low maintenance.

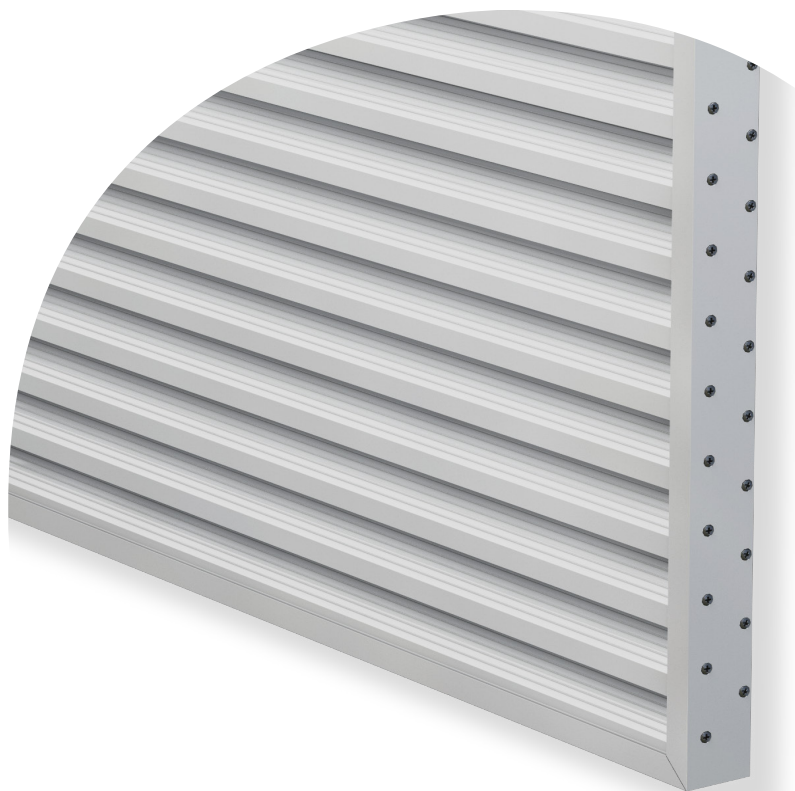
FINISH

- Available in a variety of popular architectural powder coated colours and finishes.

HARDWARE

- All hardware components locally available.

The Z louvre blades are available in a smooth or ribbed finish as shown.



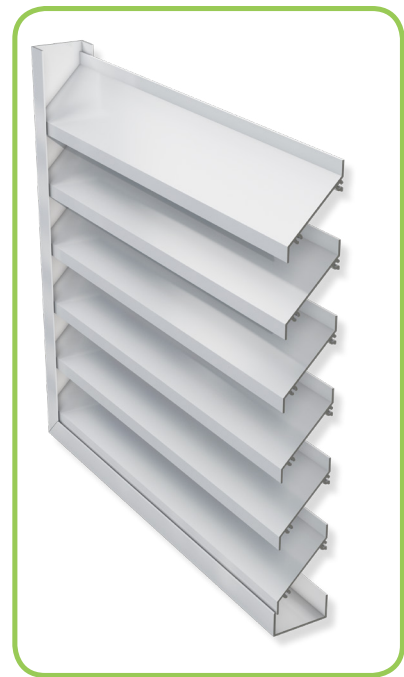
This brochure must be read in conjunction with the Installation, Cleaning & Maintenance Guidelines for the relevant system. The manuals must also be used in conjunction with the design and cutting lists from the latest version of Starfront.



TYPICAL CONFIGURATIONS







The Fixed louvre profiles range from Y louvres, rounded Y louvres, Z shaped louvres to oval shaped louvre profiles, each with its own frame to suit any opening.



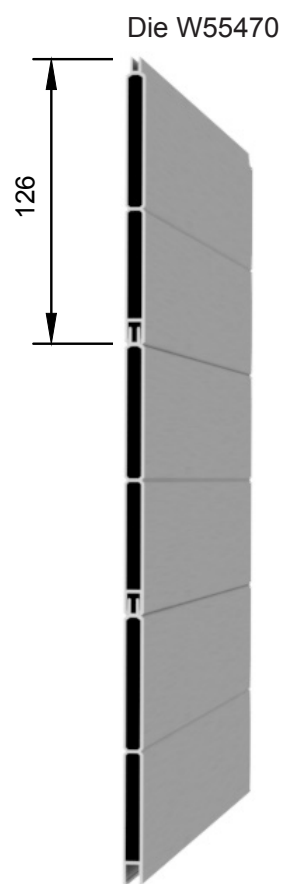
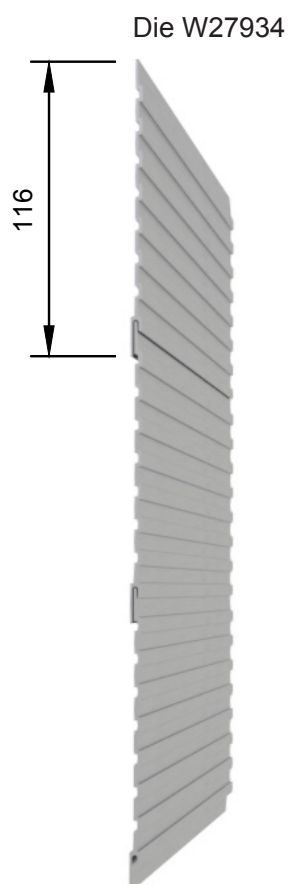
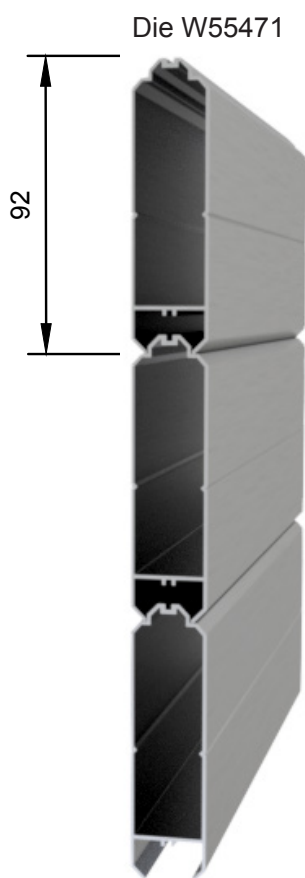
This brochure must be read in conjunction with the Installation, Cleaning & Maintenance Guidelines for the relevant system. The manuals must also be used in conjunction with the design and cutting lists from the latest version of Starfront.



APPLICATIONS

CREALCO	 HOME	 MANSION	 MALL	 TOWER
Fixed Louvres	✓			
Horizon Shutters	✓	✓		
Shadow Louvres		✓	✓	✓

FIXED CLADDING PROFILES



To find your nearest **Crealo Distribution Partner**, please visit the Crealco website at:
www.crealco.co.za

This brochure must be read in conjunction with the Installation, Cleaning & Maintenance Guidelines for the relevant system.
The manuals must also be used in conjunction with the design and cutting lists from the latest version of Starfront.