



CASSETTE
ROLL-UP INSECT SCREEN FOR WINDOWS

General Documentation Disclaimer

This manual is intended as a manufacturing and installation advisory document. For correct specifications, sizing of profiles and structural information please consult the StarFront Application. If the information you require is not available through the StarFront Application, please contact a Wispeco Technical Representative before proceeding. It is advisable to have all sizing and performance criteria checked by a qualified structural engineer to ensure that all performance and compliance will be met.

All information, recommendations or advice contained in this documentation is given in good faith to the best of Wispeco's knowledge and is based on current procedures in effect.

Since the actual use of this documentation by the user is beyond the control of Wispeco, such use is within the exclusive responsibility of the user. Wispeco cannot be held responsible for any loss incurred through incorrect or faulty use of this documentation. Training of Wispeco systems is important for ensuring correct procedures in the manufacturing of products.

Great care has been taken to ensure that the information provided is correct.

Ensure that you have the latest available manual. The revision number and date can be checked on the latest StarFront version.

Wispeco will accept no responsibility for any errors and/or omissions, which may have inadvertently occurred.

This Guide may be reproduced in whole or in part in any form or by any means provided the reproduction or transmission acknowledges the origin, revision number and copyright date.

Specifications concerning products and applications

This manual is based on standard configurations only. As there are many configurations not covered in this manual, contact a Wispeco Technical Consultant with regard to a configuration not represented herein.

AutoDesk drawings (CAD Symbol Library) are available on request and can be issued with the consent of the Wispeco Technical Department.

All mechanical joints must be sealed with Crealco Silicon. Failure to correctly seal the joints can affect the performance of the system. Information on joint sealing can be found in the Cleaning & Maintenance Manual available for download from the Wispeco website.

All drawings in the Wispeco Documentation are shown NOT to scale are used for illustrative purposes only. For correct sizing and machining of system profiles refer to the Wispeco StarFront Application.

Wispeco cannot accept responsibility for the use of standard products since Wispeco does not know where these products are being installed.

The hardware recommended in this documentation is suitable for use in most atmospheric environments. When hardware is used in severe coastal environments the manufacturer of the hardware must be consulted.

The use of non-specified hardware or incorrect mechanical fasteners can adversely affect the mechanical and weathering performance of the system and we strongly advise against deviations. A Wispeco Consultant can advise you of any hardware issues and limitations with regard to this system.

The use of anti-magnetic stainless steel screws and aluminium pop rivets is recommended to reduce galvanic corrosion in harsh environments.

Fixing lugs on frames must be positioned as per the user manual and used in accordance to the AAMSA specifications. When profiles are screwed together the screw centers must also be according to the user manual or as specified by an engineer.

All glass used within Wispeco products must comply with SAGGA regulations. Laminated glass must not stand in water.

By continuing to use this documentation you acknowledge that you understand and accept the legal disclaimer.

This manual must be read in conjunction with the Installation, Cleaning & Maintenance Document and the Performance Certificates for the relevant system. The manual must also be used in conjunction with the design and cutting list from the latest version of StarFront.

CASSETTE
ROLL-UP INSECT SCREEN FOR WINDOWS
PRODUCT MANUAL



INDEX

| | |
|-----------------------|----|
| Index | ii |
| Legal Disclaimer..... | 1 |

General System

| | |
|--------------------------------|---|
| System Introduction..... | 2 |
| Profile Identification..... | 3 |
| Hardware Kit..... | 4 |
| Hardware Identification..... | 5 |
| Cross-Sectional Details..... | 6 |
| Component Assembly Detail..... | 7 |

CASSETTE

ROLL-UP INSECT SCREEN FOR WINDOWS



This manual must be read in conjunction with the Installation, Cleaning & Maintenance Document and the Performance Certificates for the relevant system. The manual must also be used in conjunction with the design and cutting list from the latest version of StarFront.

The Wispeco Cassette 40 roller insect screens complement the existing decor giving complete protection from flying insects and other airborne pests. They are suitable for both commercial and residential installations.

The Wispeco Cassette 40 roller insect screen is the most practical and functional system for insect protection, for both user and installer. Cassette 40 is a modular roller insect screen broken down into three separate basic parts:

- A) Roller Case, including mesh, roller tube and sliding bar
- B) Side Guides
- C) Accessory kit

The above components combined make up the Cassette 40

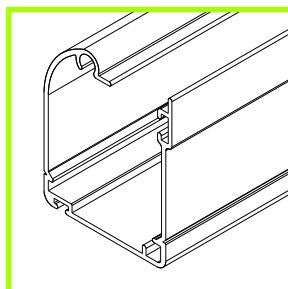
The assembly of the selected version requires very simple tools and takes only a few minutes to cut and assemble the cassette with the end caps found in the accessory kit. This can be done in the workshop or on site prior to installation. The installation is equally simple for a competent DIY person.

The system has been designed in a way that it will accept a few millimetres of tolerance in the measurements without altering the performance or the aesthetics.

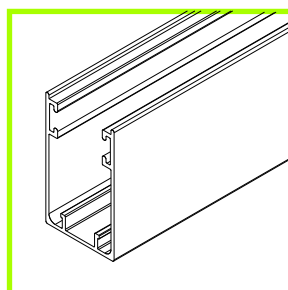
CASSETTE
ROLL-UP INSECT SCREEN FOR WINDOWS
PRODUCT MANUAL

Profile Identification

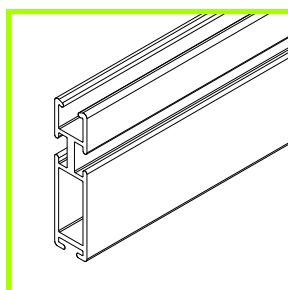
Cassette 40 Flyscreen Profiles



HEAD RAIL
W29833



JAMB 37mm
W29831



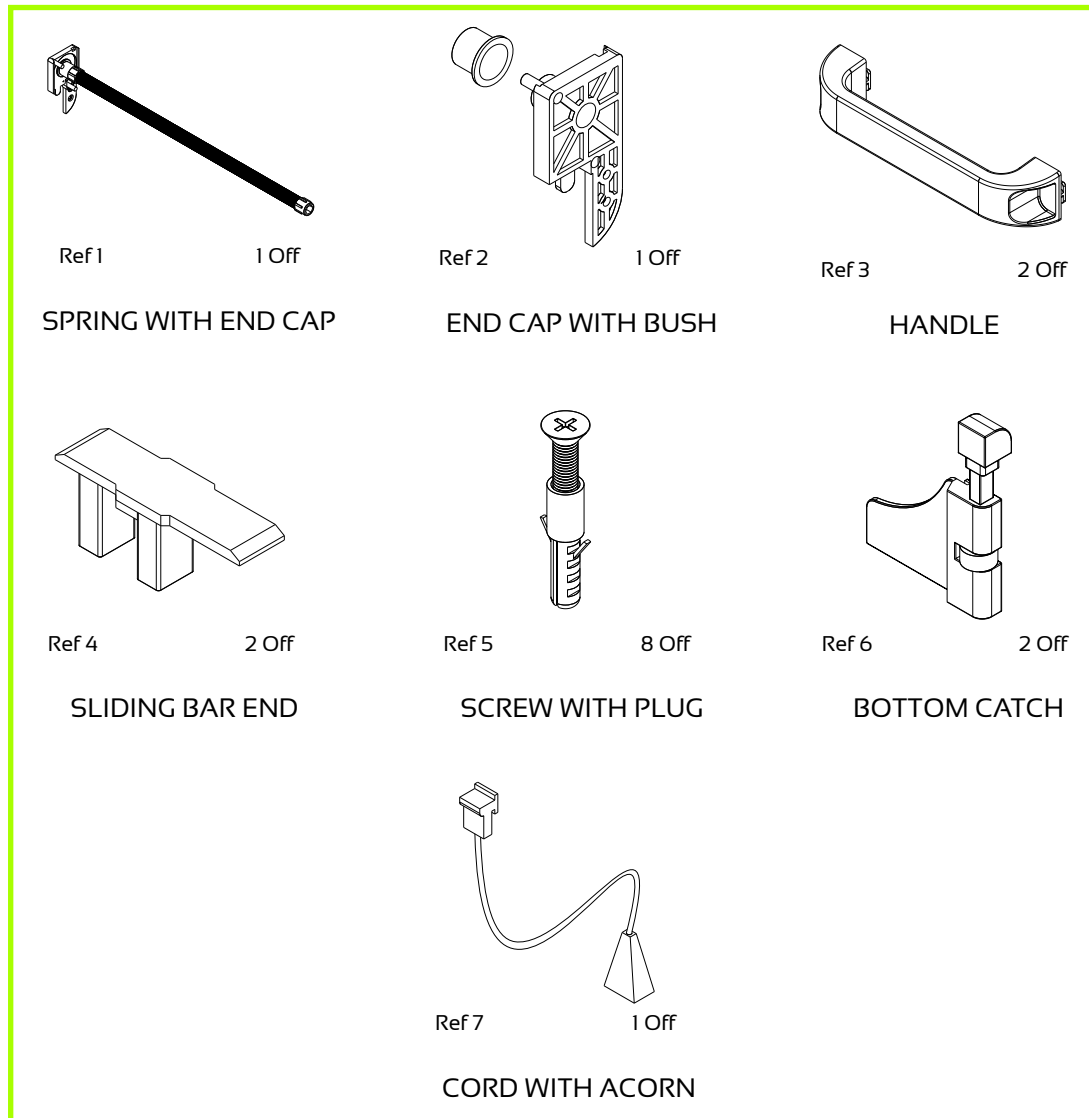
SLIDING SILL
W54453

CASSETTE
ROLL-UP INSECT SCREEN FOR WINDOWS
PRODUCT MANUAL

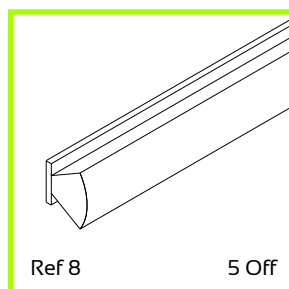
Hardware Kit

Hardware Accessory Kit

ISR-HPC40

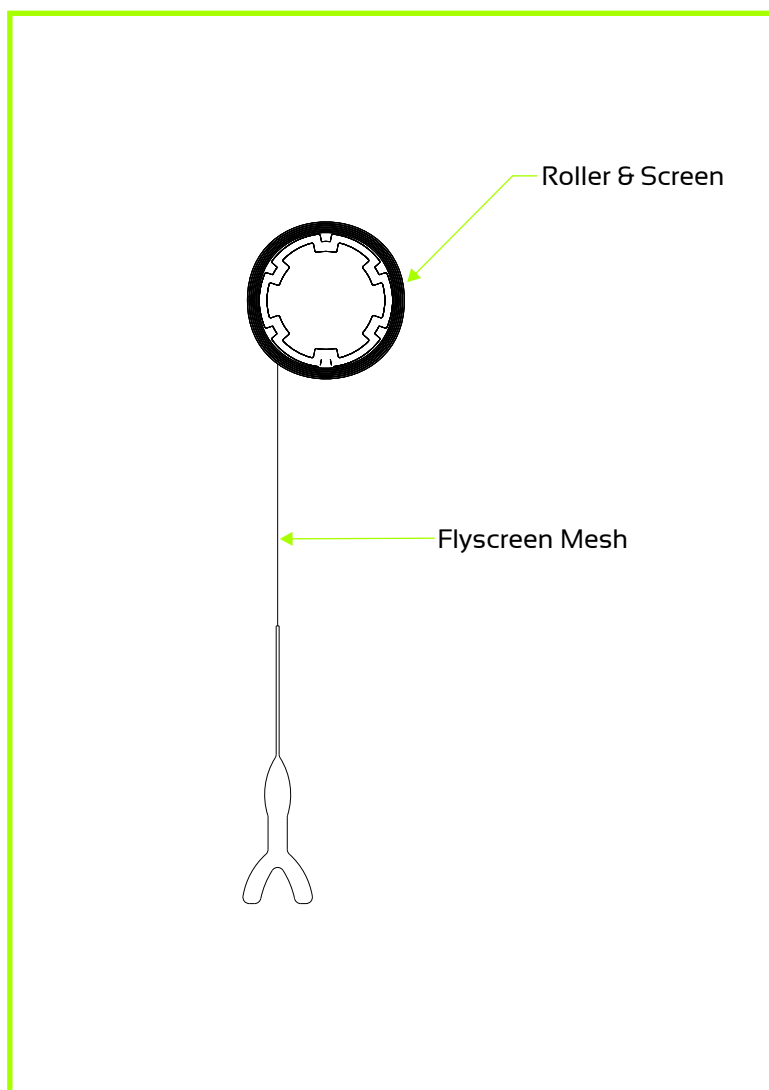


GFP-6790



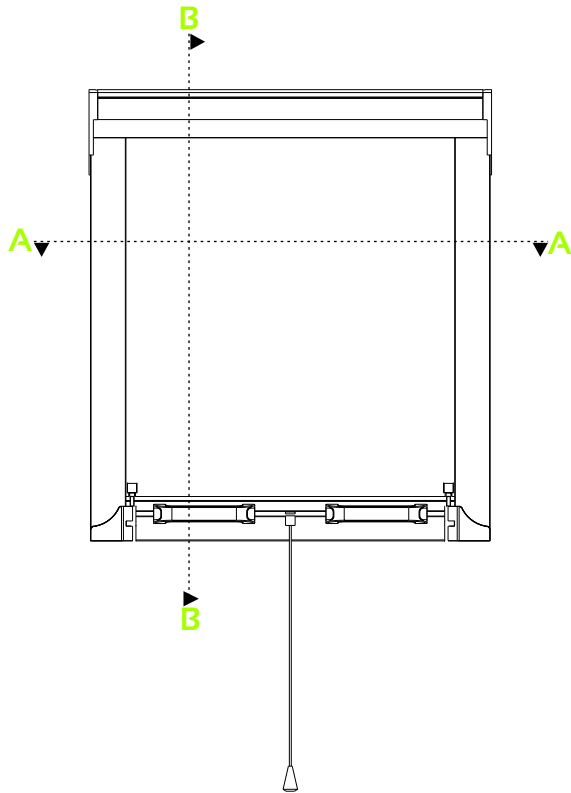
THE 3 ITEMS BELOW MAKE THE INSECT SCREEN ACCESSORY KIT

ISR-RMC40

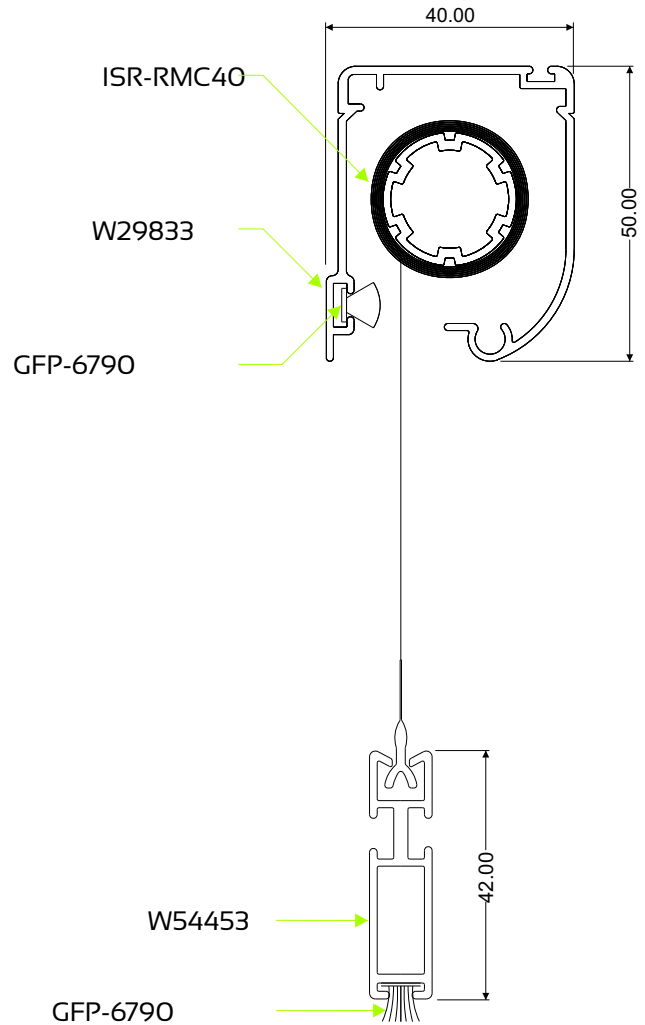


CASSETTE
ROLL-UP INSECT SCREEN FOR WINDOWS
PRODUCT MANUAL

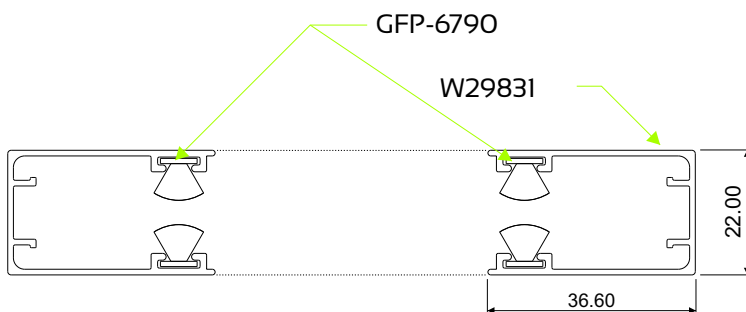
Cross-Sectional Details



SECTION B-B
Section not to scale

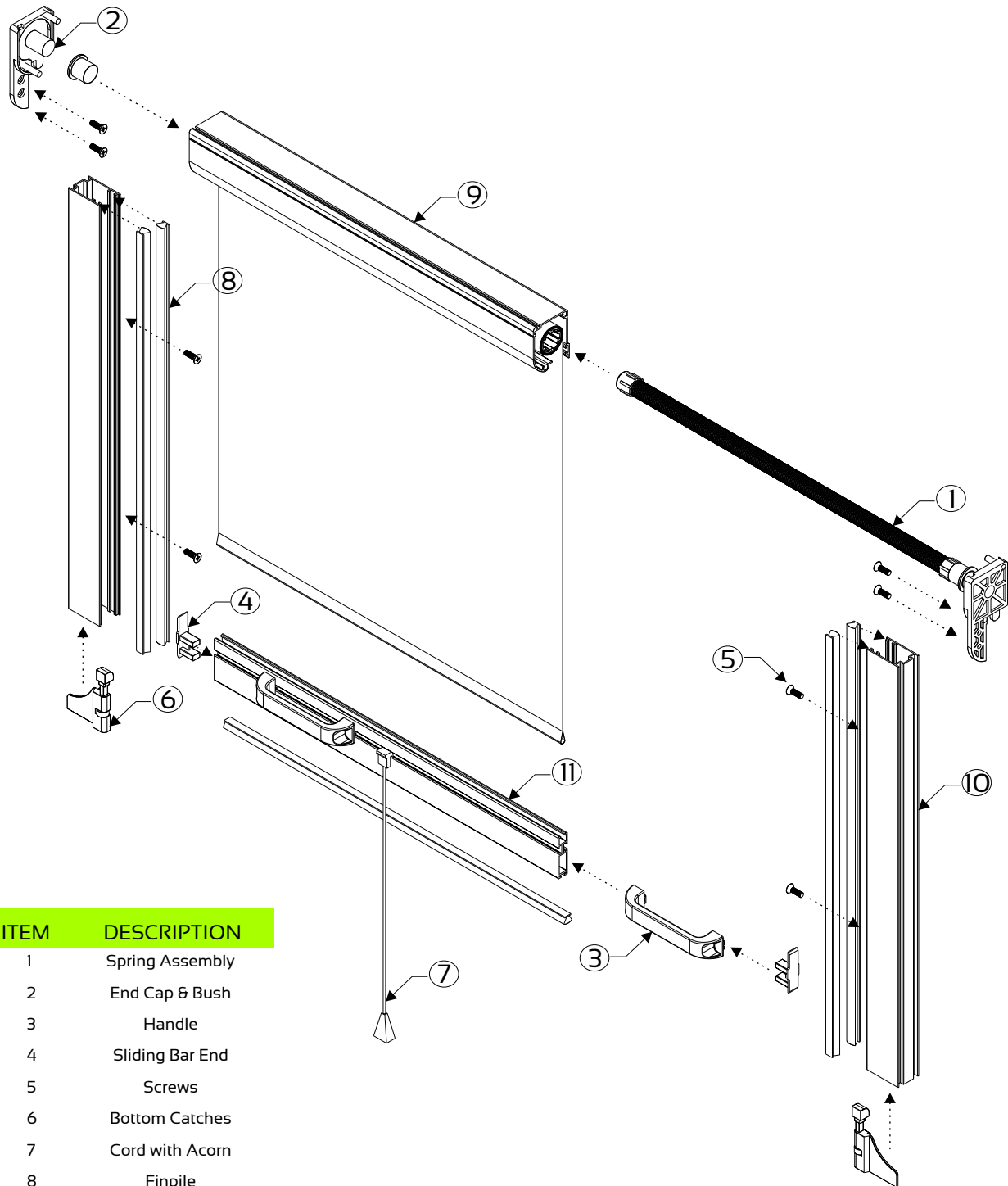


SECTION A - A
Section not to scale



CASSETTE
ROLL-UP INSECT SCREEN FOR WINDOWS
PRODUCT MANUAL

Component Assembly Detail



| ITEM | DESCRIPTION |
|------|-----------------|
| 1 | Spring Assembly |
| 2 | End Cap & Bush |
| 3 | Handle |
| 4 | Sliding Bar End |
| 5 | Screws |
| 6 | Bottom Catches |
| 7 | Cord with Acorn |
| 8 | Finpile |
| 9 | Head |
| 10 | Jamb |
| 11 | Sill |